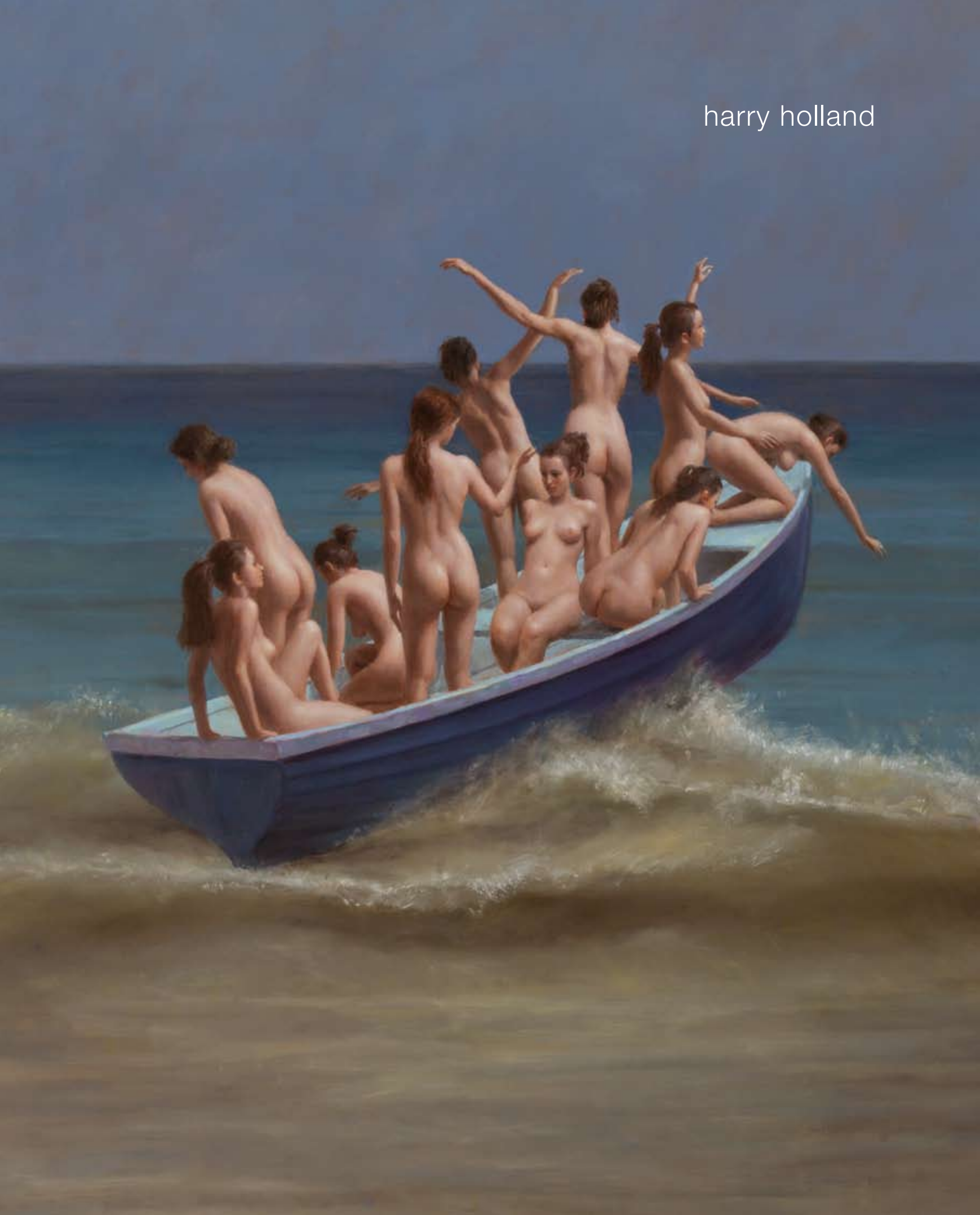


harry holland





Harry Holland is widely regarded as one of Britain's best craftsmen, who works with uncompromising commitment and sincerity to produce art that is intense and rewarding.

His style is distinctive and immediately recognisable, something which every artist seeks. The paintings are suggestive in the sense that they imply situations, events, or relationships that are not directly expressed; this imbues them with an engaging sense of mystery.

Holland was born in Glasgow in 1941. He trained at St. Martin's School of Art from 1965-69. Since the seventies this extraordinary classical artist has had over thirty solo exhibitions and figured in countless group exhibitions worldwide.

Not surprisingly, his work has developed a substantial international following amongst collectors and has found its way into numerous important public collections world-wide including the Tate Gallery, British Museum, Metropolitan Museum of Art New York, National Museum of Wales, National Portrait Gallery Canada, Welsh Arts Council, European Parliament Collection, Belgian National Collection and the Fitzwilliam Museum Cambridge.

ALBEMARLE

GALLERY

49 ALBEMARLE STREET
LONDON W1S 4JR UK
T +44 (0)20 7499 1616
F +44 (0)20 7499 1717
INFO@ALBEMARLEGALLERY.COM
WWW.ALBEMARLEGALLERY.COM



1 Falling
oil on canvas 102 x 81 cm (40 x 32 in)



2 Boat Men
oil on canvas 71 x 112 cm (28 x 44 in)



3 Envelope
oil on canvas 23 x 25 cm (9 x 10 in)



4 Boat Twelve
oil on canvas 76 x 122 cm (30 x 48 in)



5 Balcony
oil on canvas 51 x 30 cm (20 x 12 in)



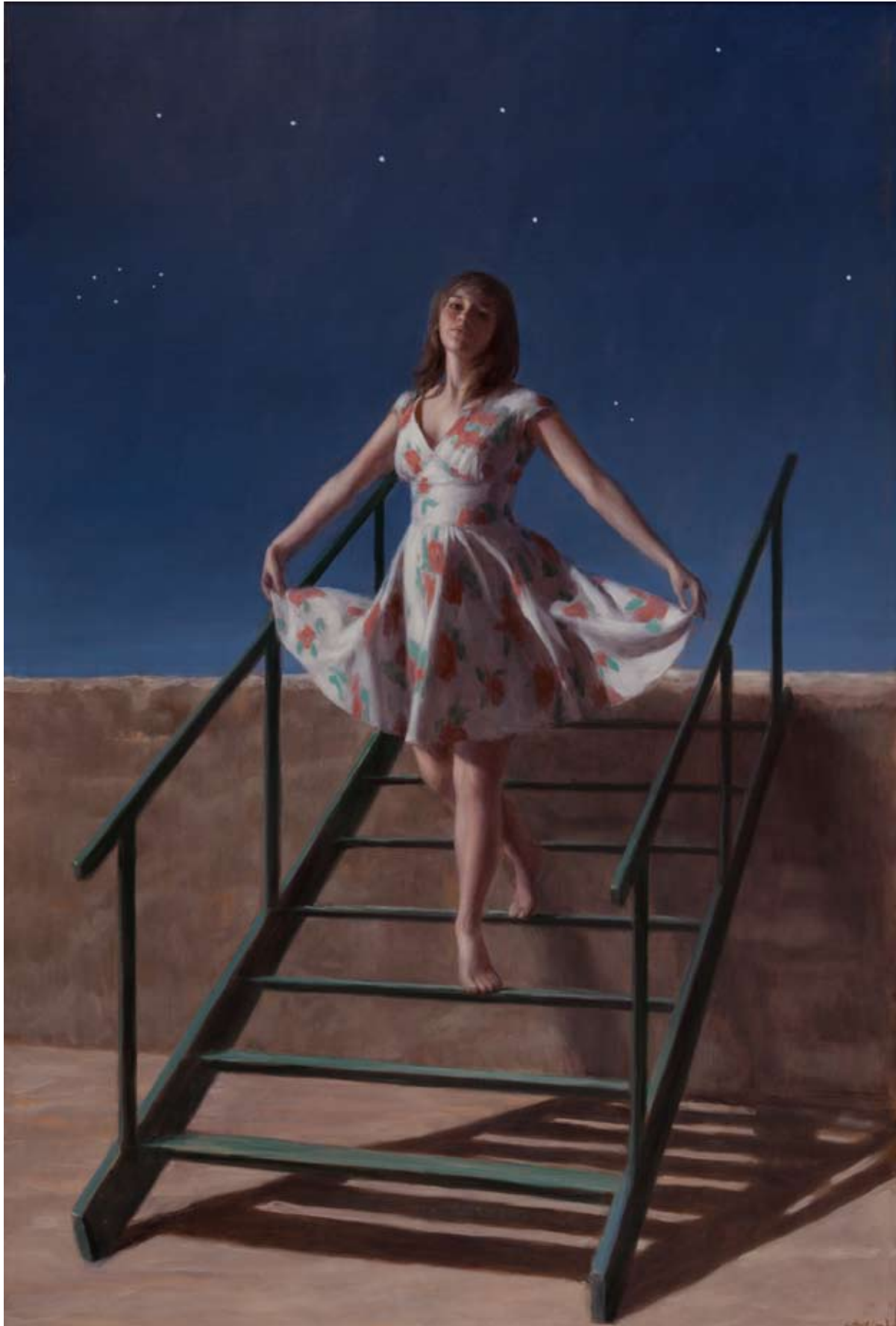
6 Boat Ten
oil on canvas 89 x 122 cm (35 x 48 in)



7 Beach
oil on canvas 76 x 66 cm (30 x 26 in)



8 Ring
oil on canvas 51 x 61 cm (20 x 24 in)



9 Steps
oil on canvas 112 x 71 cm (44 x 28 in)



10 Boat Eight
oil on canvas 76 x 117 cm (30 x 46 in)



11 Veil
oil on canvas 43 x 38 cm (17 x 15 in)



12 Red Rock
oil on canvas 89 x 112 cm (35 x 44 in)



13 Falling II
oil on canvas 112 x 86 cm (44 x 34 in)



14 Track
oil on canvas 46 x 43 cm (18 x 17 in)



ALBEMARLE

GALLERY