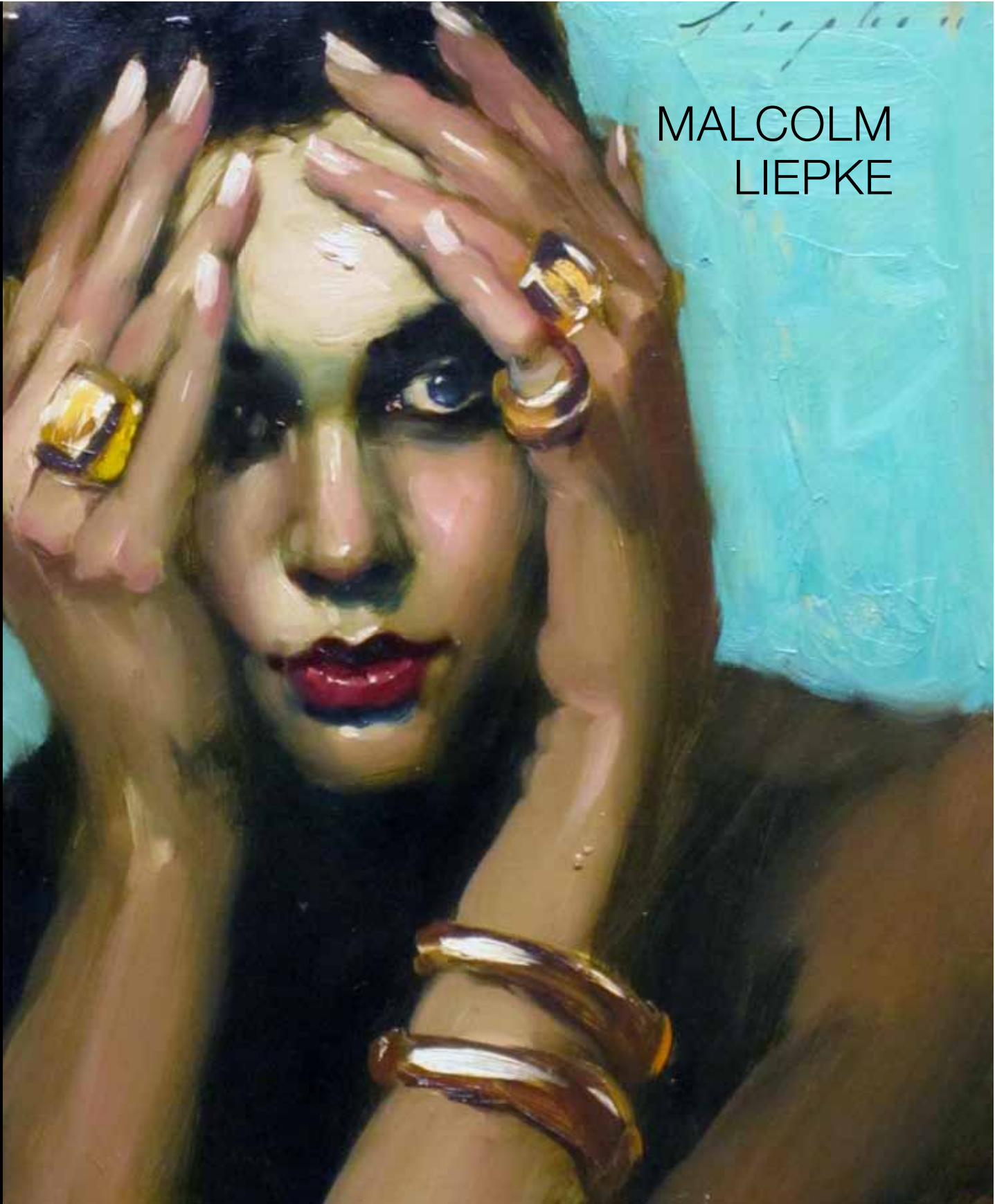


*Diaphan*  
MALCOLM  
LIEPKE





# MALCOLM LIEPKE

Liepke's reputation and profile in America has grown enormously with prestigious events and sell out shows the norm. This, his second solo exhibition in London after an absence of almost a decade, explores the sensuality and elegance of women in his own typically distinctive style.

As a mature artist now in his late fifties, he continues to grow and seek out new challenges and directions whilst retaining his hallmark skills of draughtsmanship and bold use of vibrant colours.

Over the past years there have sprung many imitators of Malcolm Liepke's technique and subject matter. On a positive note this plagiarism is in truth a compliment to the man, his work and success. However none are able to capture and match his painterly attributes, which remain uniquely Liepke.

He is represented in important museums and corporate collections such as the Brooklyn Museum and Smithsonian Museum in New York and corporate collections including AT&T, CBS Records, Fortune Magazine and Forbes.

## ALBEMARLE

---

**G A L L E R Y**

49 ALBEMARLE STREET

LONDON W1S 4JR UK

T +44 (0)20 7499 1616

F +44 (0)20 7499 1717

INFO@ALBEMARLEGALLERY.COM

WWW.ALBEMARLEGALLERY.COM

1 Curled up Model oil on canvas 36 x 36 cm (14 x 14 in)



2 Beauty in Fur Hat oil on canvas 76 x 102 cm (30 x 40 in)







3 Head on her Knee oil on canvas 51 x 41 cm (20 x 16 in)



4 Blue Eyes oil on canvas 25 x 20 cm (10 x 8 in)



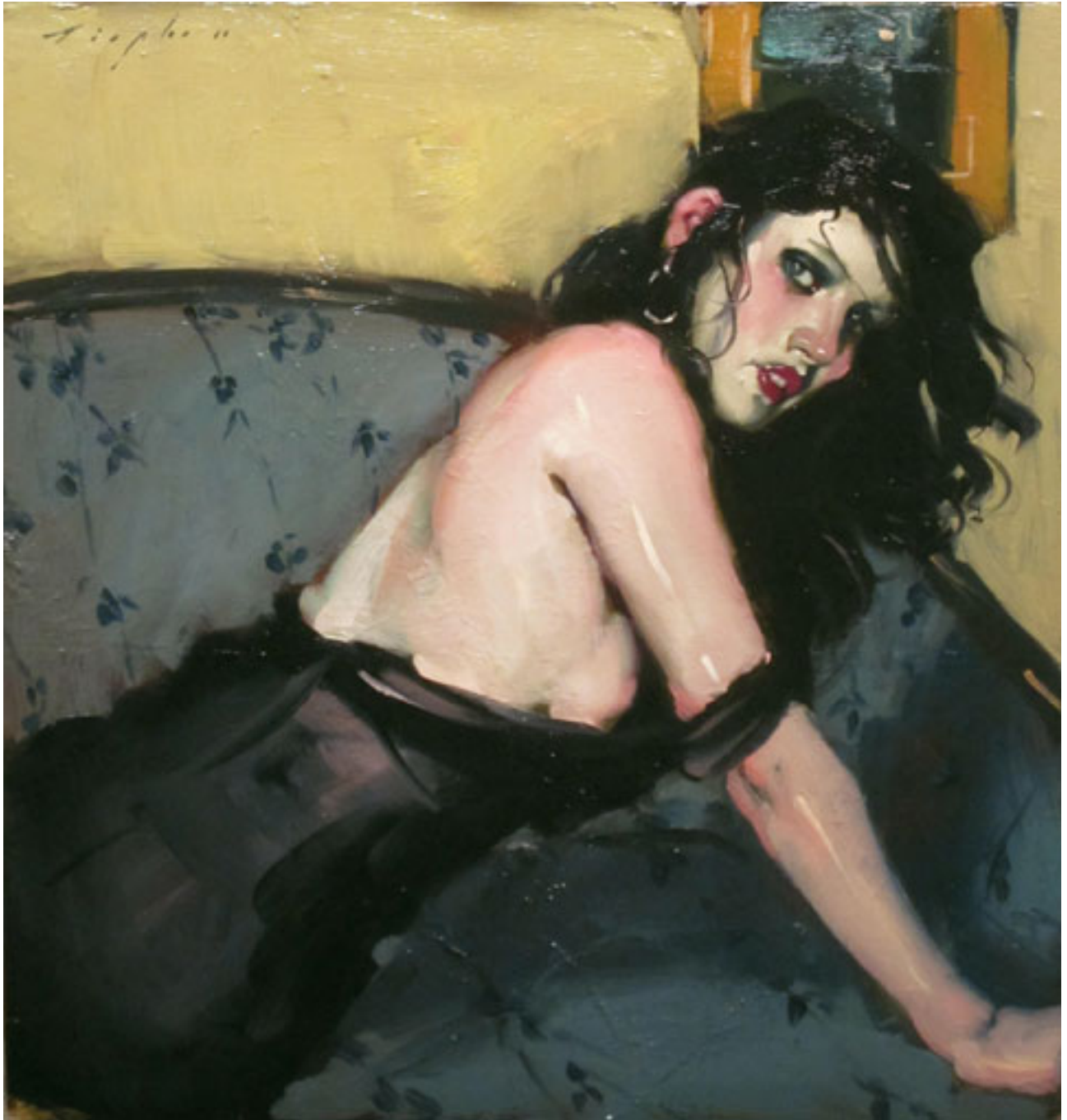
5 Red Carnation oil on canvas 38 x 25 cm (15 x 10 in)



6 Rings and Bracelets oil on canvas 28 x 23 cm (11 x 9 in)



7 Patterned Sheets oil on canvas 36 x 30 cm (14 x 12 in)



8 Black Lingerie oil on canvas 51 x 46 cm (20 x 18 in)



9 Fur Collar oil on canvas 36 x 30 cm (14 x 12 in)



10 The Green Veil oil on canvas 51 x 36 cm (20 x 14 in)



11 Lost in Thought oil on canvas 30 x 41 cm (12 x 16 in)



12 Rose Corsage oil on canvas 36 x 20 cm (14 x 8 in)

Born : 1953

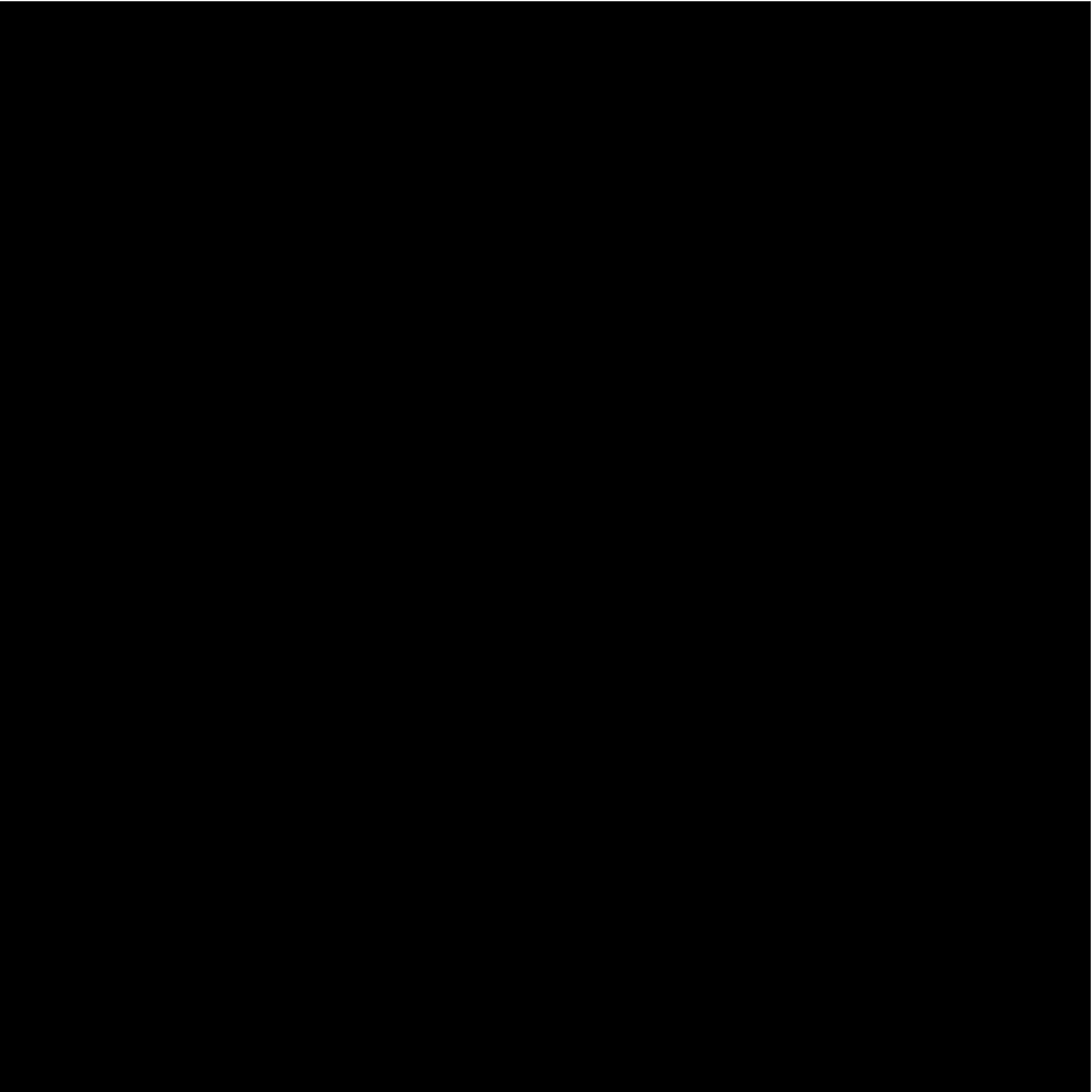
Studied at the Art Center- Pasadena, California from 1973-1975

#### SELECTED SOLO EXHIBITIONS

- 2010 Arcadia Fine Arts, New York, NY.  
Albemarle Gallery, London , UK.  
“Desire” Arcadia Fine Arts, New York, NY.
- 2009 “About Face” Arcadia Fine Arts, New York, NY.
- 2008 “A New Direction” Arcadia Fine Arts, New York, NY.
- 2007 Arcadia Fine Arts, New York, NY.
- 2006 Track 16 Gallery, Santa Monica, CA.
- 2005 Arcadia Fine Arts, New York, NY.
- 2004 Arcadia Fine Arts, New York, NY.
- 2003 Arcadia Fine Arts, New York, NY.  
Buschlen Mowatt Gallery, Vancouver, B.C.
- 2002 Arcadia Fine Arts, New York, NY.
- 2001 DNFA Gallery, Pasadena, CA.  
Eleanor Ettinger Gallery, New York, NY.
- 2000 Mendenhall Gallery, Pasadena, CA.  
Eleanor Ettinger Gallery, New York, NY.  
Albemarle Gallery, London , UK.
- 1999 Mendenhall Gallery, Pasadena, CA.  
Eleanor Ettinger Gallery, New York, NY.  
Albemarle Gallery, London , UK.
- 1998 Albemarle Gallery, London UK.  
Eleanor Ettinger Gallery, New York, NY.
- 1996 P&C Arts, Georgetown, D.C.  
Eleanor Ettinger Gallery, New York, NY.  
Mendenhall Gallery, Pasadena, CA.
- 1995 White Oak Gallery, Minneapolis, MN.  
Newbury Fine Art, Boston, MA.
- 1994 Eleanor Ettinger Gallery, New York, NY.
- 1991 Eleanor Ettinger Gallery, New York, NY.
- 1989 Eleanor Ettinger Gallery, New York, NY.
- 1987 Greenwich Workshop Gallery, Southport, CT.
- 1986 Greenwich Workshop Gallery, Southport, CT.

#### SELECTED COLLECTIONS

ABC Television  
American Can Company  
AT&T  
Atlantic Records  
Brooklyn Museum of Art, Brooklyn, NY.  
CBS Records  
Caswell Massey Corporation  
Ms. Iris Cantor, New York, NY.  
Forbes Magazine  
Fortune Magazine  
Mr. Bryant Gumbel, New York, NY.  
H.J. Heinz Corporation  
Estate of Armand Hammer  
Ms. Donna Karan, New York, NY.  
Mr. Ralph Lauren, New York, NY.  
Mobil Oil Corporation  
National Academy of Design  
National Museum of Sport  
Newsweek Magazine  
Smithsonian Museum of American Art  
Sports Illustrated Magazine  
Ms. Barbra Streisand, Los Angeles, CA.  
Mr. David Tang, Hong Kong  
Time Magazine



ALBEMARLE  

---

G A L L E R Y