

STUART LUKE GATHERER



STUART LUKE GATHERER

ALBEMARLE

G A L L E R Y

49 ALBEMARLE STREET
LONDON W1S 4JR UK

T +44 (0)20 7499 1616

F +44 (0)20 7499 1717

INFO@ALBEMARLEGALLERY.COM

WWW.ALBEMARLEGALLERY.COM

For my Mother

When asked to explain my paintings the well-known aphorism 'writing about painting is like dancing about architecture' increasingly comes to mind. However, I feel that the disparate nature of this exhibition requires a few short words of introduction.

This exhibition could be broadly divided into three groups. Firstly, there is a group of paintings that have been inspired by Chaucer's "The Canterbury Tales". Secondly, a group of tenebrous interiors, and thirdly, a group of nude figures. As the paintings were conceived and executed in no particular order, there is an inevitable cross-pollination between the groups. For instance, "The Pastor's Tale" could belong to the first or second groups, while the "Self-portrait with model" could belong to the second or third group.

Timeless and still relevant, Chaucer's classic book is the inspiration for a group of paintings that respond to the themes in the individual pilgrim's tales- some paintings are quite literal, others more removed. I offer no further narrative to these paintings as I didn't want to simply illustrate the tales, but rather to use them as a jumping off point for a collection of autonomous works.

Ostensibly, the second group could be described as paintings about nothing at all- a meditation on loneliness and isolation. However, the dispossessed and disaffected caught on the edge of light and dark - the penumbra- are only bit players to the light itself; natural and artificial, warm and cold, reflected and cast. It is the light that both reveals and conceals that heightens the sense of disquietude.

The third group of paintings are studies of the human form. These paintings show my continuing obsession with paint as substance. Each piece is built up in numerous layers, thick and thin, transparent and opaque- every layer building on the previous and informing the next. Rooted in the ancestral tradition of the life class, the study of the figure is the foundation of my work as a figurative painter.

I have not grouped them in the following catalogue as each painting should stand alone. My ambition is to create memorable aesthetic experiences that are visual rather than conceptual.

Stuart Luke Gatherer

1 The Waiting Room
oil on canvas 81 x 122 cm (32 x 48 in)



2 Self Portrait with Model
oil on canvas 114 x 92 cm (45 x 36 in)



3 Lamp
oil on canvas 122 x 81 cm (48 x 32 in)



4 The Miller's Tale
oil on canvas 112 x 140 cm (44 x 55 in)



5 Georgian Window
oil on canvas 89 x 124 cm (35 x 49 in)



6 The Knight's Tale
oil on canvas 89 x 125 cm (35 x 49 in)





7 Wooden Stool
oil on canvas on panel 30 x 30 cm (12 x 12 in)



8 Lying Nude
oil on canvas on panel 15 x 20 cm (6 x 8 in)



9 Nude Study I
oil on canvas on panel 20 x 15 cm (8 x 6 in)



10 B-29
oil on canvas on panel 40 x 50 cm (16 x 20 in)

11 White Stool
oil on canvas 71 x 89 cm (28 x 35 in)



12 The Friar's Tale
oil on canvas 89 x 125 cm (35 x 49 in)



13 Moving Out
oil on canvas 92 x 114 cm (36 x 45 in)



14 The Franklin's Tale
oil on canvas 77 x 107 cm (30 x 42 in)





15 Model in Profile
oil on canvas on panel 30 x 40 cm (12 x 16 in)

16 Nude Study II
oil on canvas on panel 20 x 15 cm (8 x 6 in)



17 Venus
oil on canvas on panel 30 x 30 cm (12 x 12 in)



18 Model in Spotlight
oil on canvas on panel 40 x 50 cm (16 x 20 in)

19 The Parson's Tale
oil on canvas 89 x 125 cm (35 x 49 in)



20 Together Apart
oil on canvas 51 x 71 cm (20 x 28 in)



21 The Canon Yeoman's Tale
oil on canvas 63 x 89 cm (25 x 35 in)



22 Morning Sunlight
oil on canvas on panel 50 x 70 cm (20 x 28 in)





23 Life Room
oil on canvas on panel 40 x 56 cm (16 x 22 in)



24 Model's Back
oil on canvas on panel 45 x 30 cm (18 x 12 in)



25 1940's Pose
oil on canvas on panel 45 x 30 cm (18 x 12 in)



26 Kneeling
oil on canvas on panel 38 x 60 cm (15 x 24 in)

27 The Merchant's Tale
oil on canvas 81 x 102 cm (32 x 40 in)



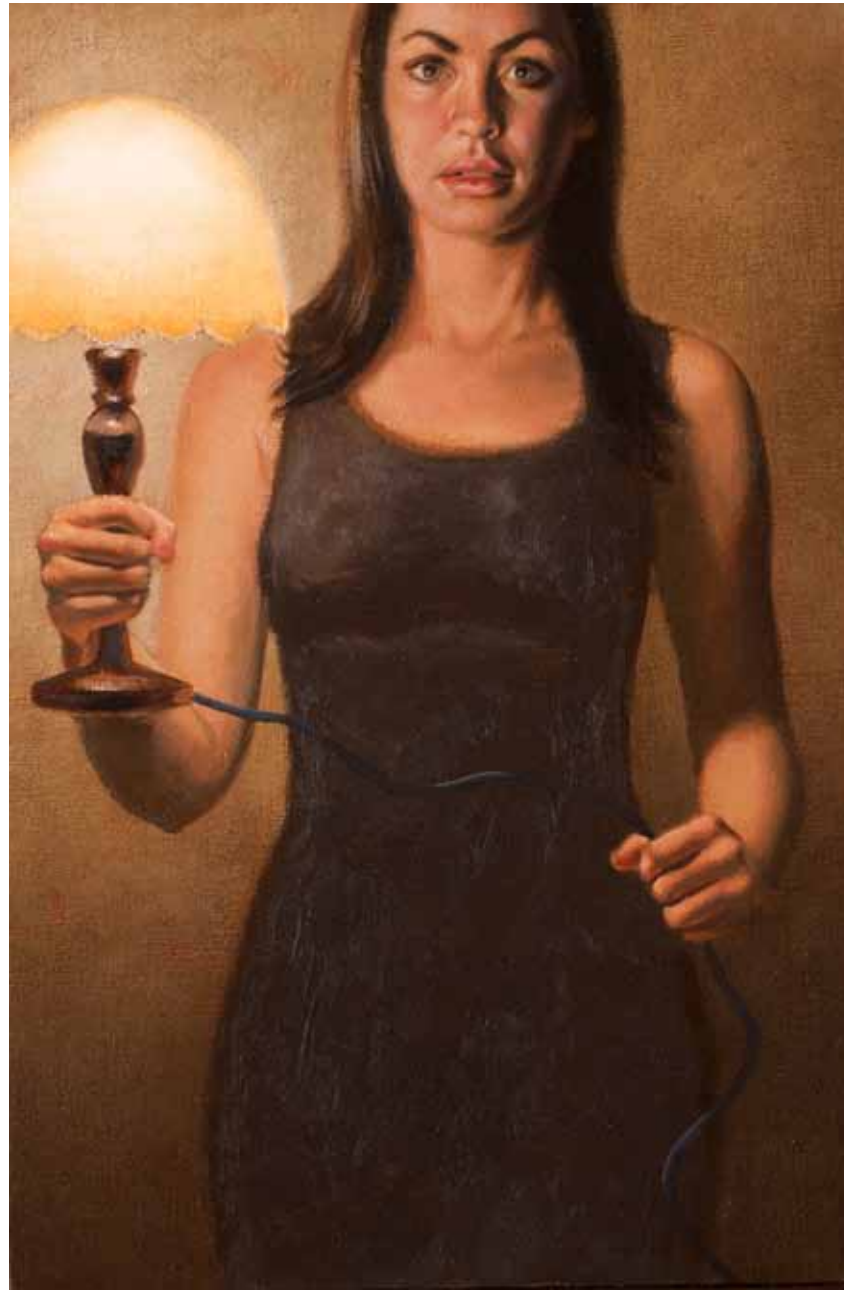
28 Target
oil on canvas 60 x 45 cm (24 x 18 in)



29 The Friar's Tale (Study)
oil on canvas on panel 30 x 24 cm (12 x 9 in)



30 Mushroom Lamp
oil on canvas on panel 45 x 30 cm (18 x 12 in)





31 The Knight's Tale (Head Study)
oil on canvas on panel 24 x 18 cm (10 x 7 in)



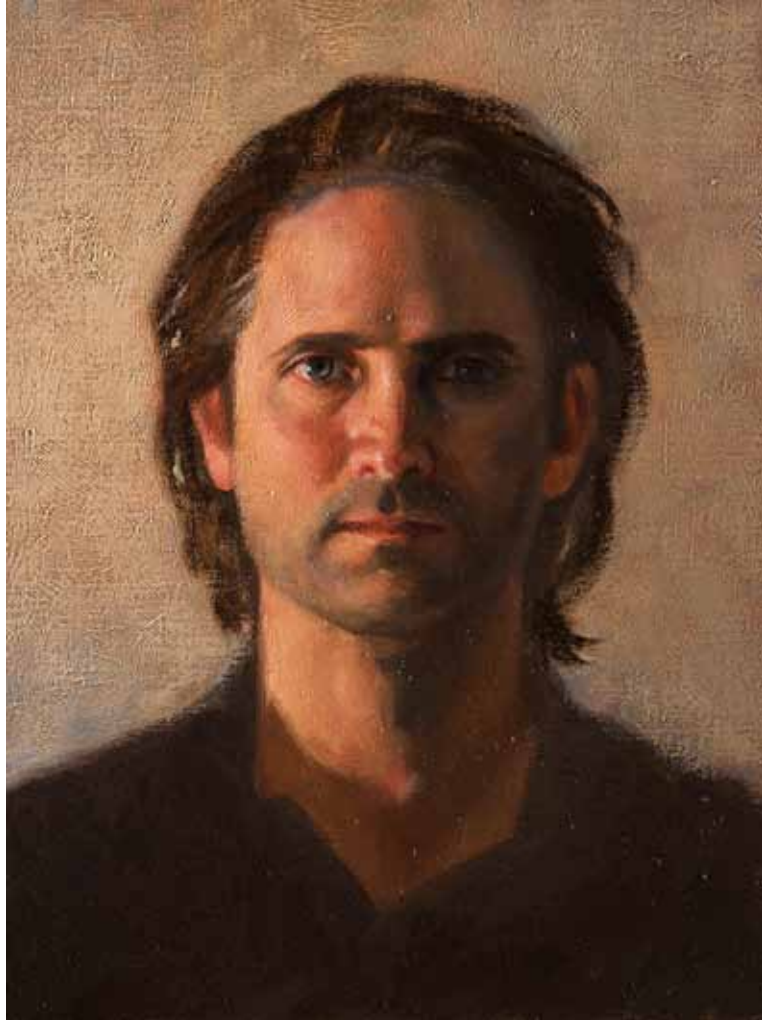
32 Hair to One Side (Head Study)
oil on canvas on panel 30 x 24 cm (12 x 10 in)

33 Shard
oil on canvas 81 x 69 cm (32 x 27 in)





34 Green Top (Head Study)
oil on canvas on panel 24 x 18 cm (9 x 7 in)



35 Self Portrait (Head Study)
oil on canvas on panel 20 x 15 cm (8 x 6 in)

STUART LUKE GATHERER was brought up in the Eastern Highlands of Scotland, and graduated from Edinburgh College of Art in 1995 with an MA in Fine Art. His paintings entice the viewer to interact with contemporary scenes from the vantage point of an unseen onlooker. This creates a psychological ambiguity that is emphasised by strong forms and colours modelled in dramatic light and shade.

Selected Exhibitions:

- 2012 Eleanor Ettinger Gallery, New York Self-portrait show
- 2011 Eleanor Ettinger Gallery, New York British Figurative art
- 2010 Albemarle Gallery, London Charity Group Exhibition
McEwan Gallery, Ballater, Scotland Summer Show
Eleanor Ettinger Gallery, New York Self-portrait show
- 2009 Albemarle Gallery, London Winter Show
McEwan Gallery, Ballater, Scotland Group Show
- 2008 Albemarle Gallery, London Solo Exhibition
Albemarle Gallery, London Summer Show
- 2007 Albemarle Gallery, London Solo Exhibition
Albemarle Gallery, London Summer Show
- 2005 Albemarle Gallery, London Solo Exhibition
Albemarle Gallery, London What is Realism
Forni Gallery, Bologna Nuova Figurazione Britannica
- 2004 Eleanor Ettinger Gallery, New York Solo Exhibition
- 2002 Albemarle Gallery, London Solo Exhibition
- 2001 Albemarle Gallery, London Solo Exhibition
- 2000 McEwan Gallery, Ballater, Scotland. Solo Show
- 1999 Albemarle Gallery, London. Millennium Show
Eleanor Ettinger Gallery, New York. Solo Show
- 1998 Albemarle Gallery, London Scottish Figurative Painting
Albemarle Gallery, London Solo Exhibition

- 1997 20th Century British Art Fair, London
Art '97, The London Contemporary Art Fair
The Portland Gallery, London. Solo Show
- 1996 The Art Exposure Gallery, Glasgow
Glasgow Art Fair
The Art Exposure Gallery, Glasgow. Selected Graduates

Collections:

Prudential Corporation, Standard Chartered Bank
The Royal Society of Chemistry, The Calgary Museum of Art

ALBEMARLE

G A L L E R Y